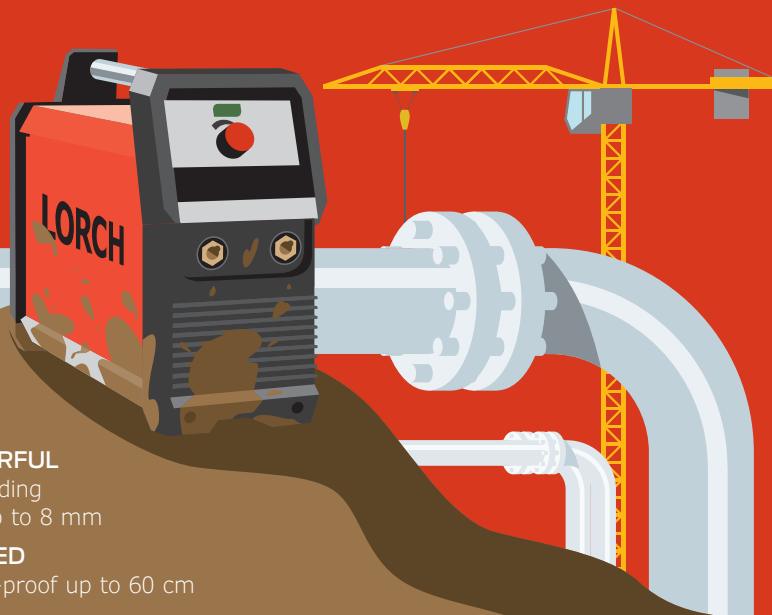


The X series

WESS WELDING EQUIPMENT SALES & SERVICE
Ph: 08 8243 2200 Fax: 08 8347 2437 Email: sales@wess.com.au Website: www.wess.com.au

WELD EVERYWHERE. IN ANY CONDITIONS. WITHOUT COMPROMISE.



EXTREMELY POWERFUL

Perfect electrode welding with a diameter of up to 8 mm

EXTREMELY RUGGED

Splash-proof and fall-proof up to 60 cm

EXTREMELY VERSATILE

Welds with basic to rutile to CEL electrodes

ELECTRODE

X SERIES

The X series at a glance

- **Enhanced performance thanks to MicorBoost.** Fully resonant welding inverter. As soon as the current is reduced due to external disruptions, significantly higher voltage reserves are then activated. The result is electrode welding that leaves nothing to be desired.
- **For extreme applications.** Its low weight, compact external dimensions and protection against falls from a height of up to 60 cm make the X series the model that is best suited for welding applications on the go.
- **Multi-talented.** The Lorch X 350 is always the perfect choice when you need to weld with basic, rutile and special electrodes that have a diameter of up to 8 mm or need a tool that can handle vertical down-welding operations with cellulose electrodes (CEL). What is more, ContacTIG allows you to perform TIG welding operations using direct current.
- **Dependable.** When applying MicorBoost technology, you can rest assured that your machine will ignite in reliable fashion and produce a stable arc even when operated on long mains cables with a length of up to 200 m or when hooked up to a generator.
- **Gouging.** Apart from electrode welding, the Lorch X 350 also handles gouging applications without a hitch.
- **CC and CV curve for MIG-MAG welding.** The Lorch X 350 can also be used with semi-automatic MIG-MAG wire feeder cases.



- **Hotstart.** Thanks to the adaptive automatic Hotstart feature you can always count on perfect ignition.
- **Anti-Stick System.** The Anti-Stick system prevents the electrode from sticking, especially useful for positional welding.
- **Arc-Force regulation.** Arc-Force regulation supports the welding process with increased arc stability and optimised metal transfer.
- **Mobile.** Thanks to its low weight the Lorch X 350 preserves your mobility and flexibility no matter where your work takes you.
- **Remote control.** The Lorch X 350 can now also be controlled using an optional hand or foot remote control.
- **Polarity change function.** The PST variant of the Lorch X 350 includes a helpful polarity change function. This feature eliminates the need for exchanging the electrode and welding return cable in at a different socket as both the machine and the remote control let you effortlessly reverse the polarity (DCEN-DCEP).

Versions



	X 350 BasicPlus	X 350 ControlPro	X 350 ControlPro PST
Welding range	A 10 – 350	10 – 350	10 – 350
Mains connection 3 ~ 400 V	●	●	●
Operating concepts			
BasicPlus	●	–	–
ControlPro	–	●	●
Equipment			
CEL-capable electrode welding inverter, electrode pre-selection and TIG function	●	●	●
Special vertical seam and pulse welding function	–	●	●
Used with semi-automatic MIG-MAG wire feeder cases	●	●	●
Integrated polarity reversal technology (PST)	–	–	●

● Standard equipment

Operating concepts



BasicPlus

- “3 steps to weld” operating concept
- infinitely variable current setting
- exact-ampere digital display
- Electrode pre-selection (basic, rutile and CEL) for optimum welding parameters
- Hotstart can be set in submenu
- TIG-DC welding function (with ContactTIG)
- can also be used with semi-automatic MIG-MAG wire feed cases (CV curve)



ControlPro

- “3 steps to weld” operating concept
- infinitely variable current setting
- exact-ampere digital display
- Electrode pre-selection (basic, rutile and CEL) for optimum welding parameters
- Quick access to Hotstart
- TIG-DC welding function (with ContactTIG)
- Special function for electrode vertical seam welding
- Pulse function
- can also be used with semi-automatic MIG-MAG wire feed cases (CC and CV curve)
- also available as PST variant with polarity reversal/change function

Highlights

Protected all-around against water ingress – protection category IP 34

The X is equipped with everything you might need for operation outside of the warm workshop: compact dimensions, protection against falls from a height of up to 60 cm, all around protection against water splashes, excellent shielding against dust and foreign particle infiltration.

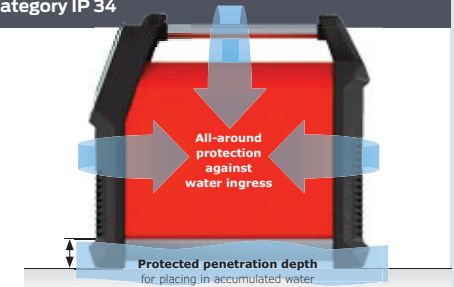
In addition a special base construction, enabling a sufficient ground clearance as well as a stable platform. The robust base plate guarantees a long service life.



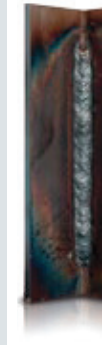
Robust base plate



Replaceable dust filter



Electrode vertical seam welding



You no longer have to swing back and forth, but can simply guide the electrode straight up. Thanks to patented control technology the MicorBoost technology always provides sufficient power to keep the arc ignited and stable. What is more, now does away with the need to weld in two passes, as one pass with a large electrode will often suffice.



Protection against falls

The statistics state: Every machine is dropped at least 4 times during its life time and this is under normal operating conditions. In extreme use, the danger increases and also the probability of a drop.

The standard requires: Unit must be capable of surviving a free fall from a height of 25 cm. Falls from a greater height usually render the unit broken and unusable. Not so with our products. We have designed a special crash protection for the X. The result is impressive: with a fall protection from up to 60 cm height.



Technical data

	X 350	X 350 PST
Welding process	Electrode TIG	Electrode TIG
Electrode Ø	mm 1.6 – 8.0 CEL up to 6.0	1.6 – 8.0 CEL up to 6.0
Weldable material	Steel, stainless steel	Steel, stainless steel
Welding range	A 10 – 350	10 – 350
Duty cycle I max. (40 °C)	% 35	35
Current at 60% duty cycle (40 °C)	A 280	280
Mains voltage	V 3 ~ 400	3 ~ 400
Dimensions (L x W x H)	mm 515 x 185 x 385	515 x 185 x 385
Weight	kg 18.6	20.2